

Spanish
Bilingual
Program



Escuela Canyon Meadows

Spanish Bilingual Program

Open House

January 11, 2024 - 6:30 pm

Spanish Bilingual Program



Agenda

- | | |
|---------|---|
| 6:30 pm | Bienvenidos / Welcome
Acknowledgment of the Land |
| 6:35 pm | Student Performance |
| 6:40 pm | Program and School Information |
| 7:10 pm | School Tour |
| 7:30 pm | Q&A |

ECM Truth and Reconciliation Commitment

June 21, 2023 Commitment

In recognition of National Indigenous Peoples Day, and in alignment with the CBE Education Plan, Canyon Meadows School acknowledges and supports the Truth and Reconciliation Commission (TRC) Calls to Action, and makes the following commitment to action for the 2023-2024 school year:

Canyon Meadows students and Faculty members commit to **learning through land-based experiences and Indigenous stories** while **going out on the land** to connect with:



ECM Truth and Reconciliation Commitment

The Spirit – To Be: our **Cultural Identity**

The Heart – To Belong: **living in Harmony with Self, Others and the Natural World**

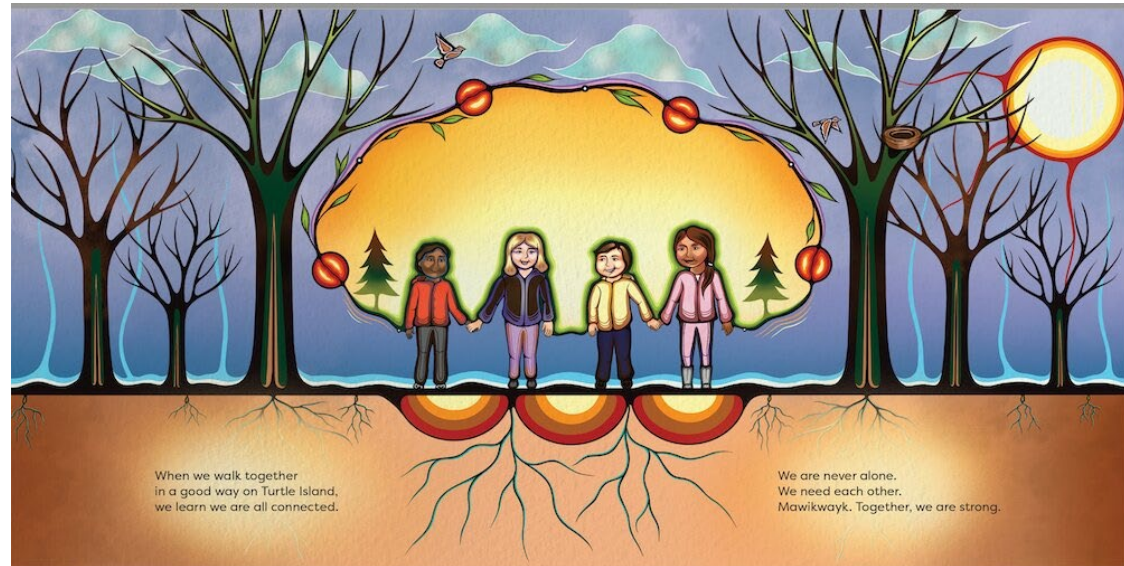
The Body – To Do: **being Independent and Collaborative**

The Mind – To Know: **developing a Lifelong Learning mindset**

In making our commitment, Call to Action # 63 offered inspiration.



Honouring our Truth and Reconciliation Commitment



Maatoomsii'Pookaiks "Children First"

Professional Learning Day
November 9, 2023



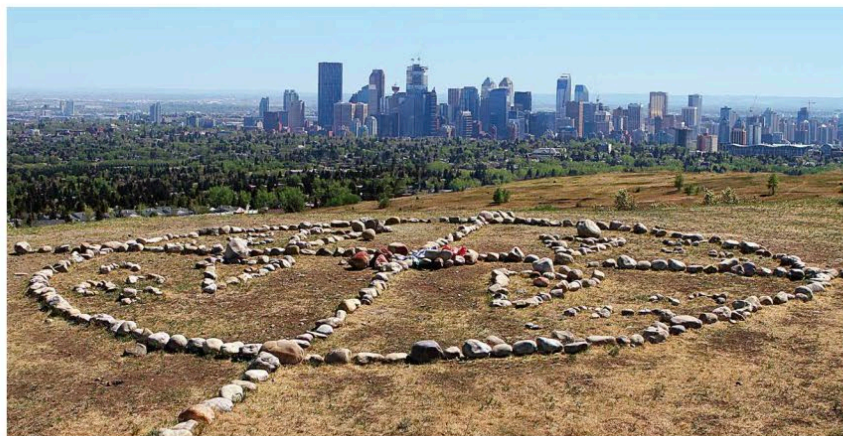
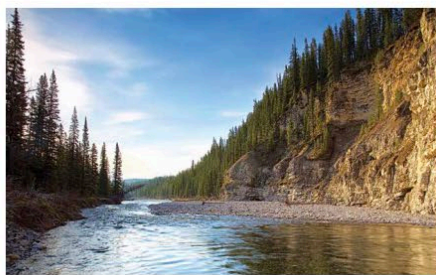
Acknowledgment of the Land Walking Together

Acknowledging the land is about relationship. It is about walking together and knowing we are all connected. We acknowledge our primary teacher, the land, and from it we learn about the gifts of story, of history, of language, all the teachings the land holds. We are who we are because of the land we come from.

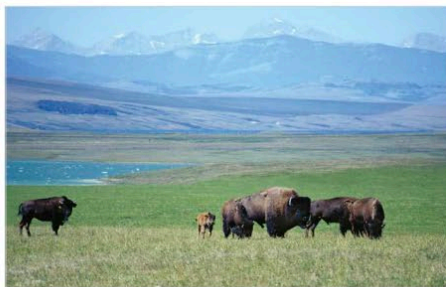
When we walk together, we learn about the world. To those who were here before us and to those who will be here after us, we say thank you. Our acknowledgement acknowledges the special place where we gather.



Acknowledging the land where we gather

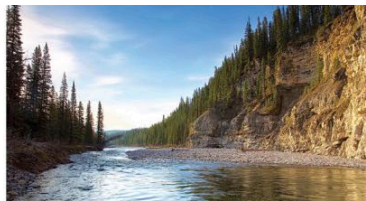


We would like to acknowledge the traditional territories and oral practices of the Blackfoot Nations, which includes the Siksika, the Piikani, and the Kainai. We also acknowledge the Tsuut'ina and Stoney Nakoda First Nations, the Métis Nation, and all people who make their homes in the Treaty 7 region of Southern Alberta.

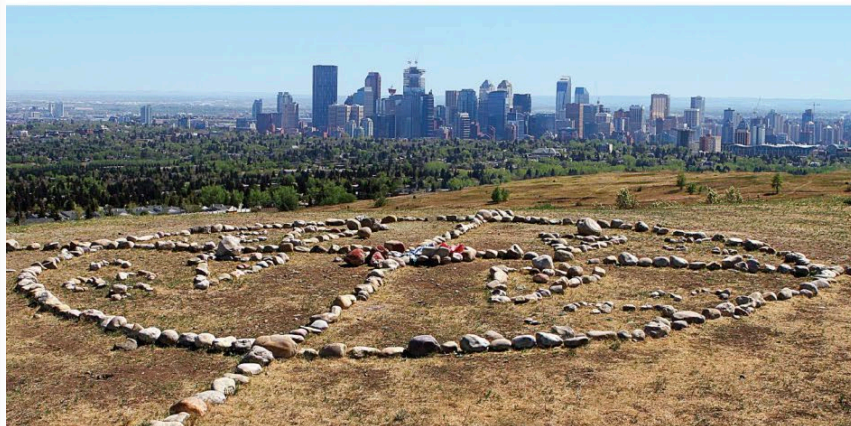


learning | as unique | as every student

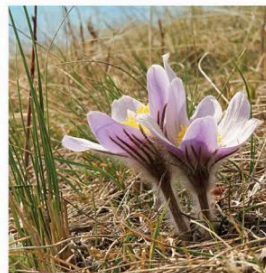
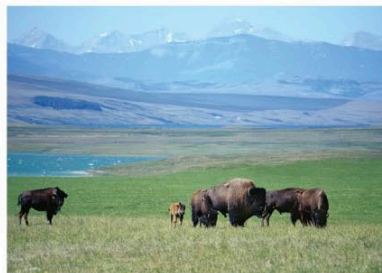
Spanish Bilingual Program



Reconociendo la tierra donde nos encontramos



Quisiéramos reconocer los territorios y las tradiciones orales de las naciones Blackfoot, que incluyen a los Siksika, Piikani, y Kainai. También reconocemos las primeras naciones Tsuut'ina y Stoney Nakota y la Nación Métis (de la Región 3), y todas las naciones que han formado su hogar en la región del Tratado 7 del Sur de Alberta.



This is Us!

Student Performance

Grade 1 Class: “Amigos para siempre”

Grade 5 Students:

“My experience as a student
in the Spanish bilingual program”



Escuela Canyon Meadows ISA and Faculty



- Escuela Canyon Meadows Designation of **International Spanish Academy** by the Ministry of Education and Science of Spain
- Spanish Bilingual Program since 2001
- Teachers from multiple Spanish speaking countries such as: Argentina, Cuba, Ecuador, El Salvador, Mexico, Perú and Spain.
- High number of our Faculty members holds a Masters Degree in Education with a focus on Second Language Learning, Creativity in Education, Mental Health and Neuroscience.

Escuela Canyon Meadows Office Staff



Sra. Miriam Rau
Admin. Assistant

Sra. Jen Clement
Office Assistant and Lunchroom
Lead Supervisor

What Happens at Escuela Canyon Meadows School Council?

- Welcome Alexis ECM Parent Council Vice-Chair



Alternative Programs

- Providing families choices to meet the unique learning needs of each student
- Programs focus on a particular language, culture, subject (French, German, Mandarin, Spanish , Arts, Science), or teaching philosophy (i.e., TLC)
- Informed choice is essential – what is THIS particular program about and how does it meet MY child's needs?



Spanish Bilingual Program

Benefits to Learning Another Language

Additional Language learning enables students to further develop their literacy, problem-solving and memory skills while building confidence and pride in learning another language.

- Expands the intellect
- Teaches responsible citizenship
- Develops enhanced feelings of self-esteem and pride in having acquired an additional language
- Strengthens English literacy skills
- Encourages the joy of lifelong learning
- Promotes exploration, understanding and appreciation of the many different cultures around the world and contributes to multilingualism and multiculturalism
- Allows students to compete internationally
- Provides students with more choices for advanced education and career options
- Broadens students' cultural life through access to literature, art, music and theatre in another language



Spanish Bilingual Program

**Watch your child
become fluent.**



A Spanish Bilingual Education, Your Gateway to the World

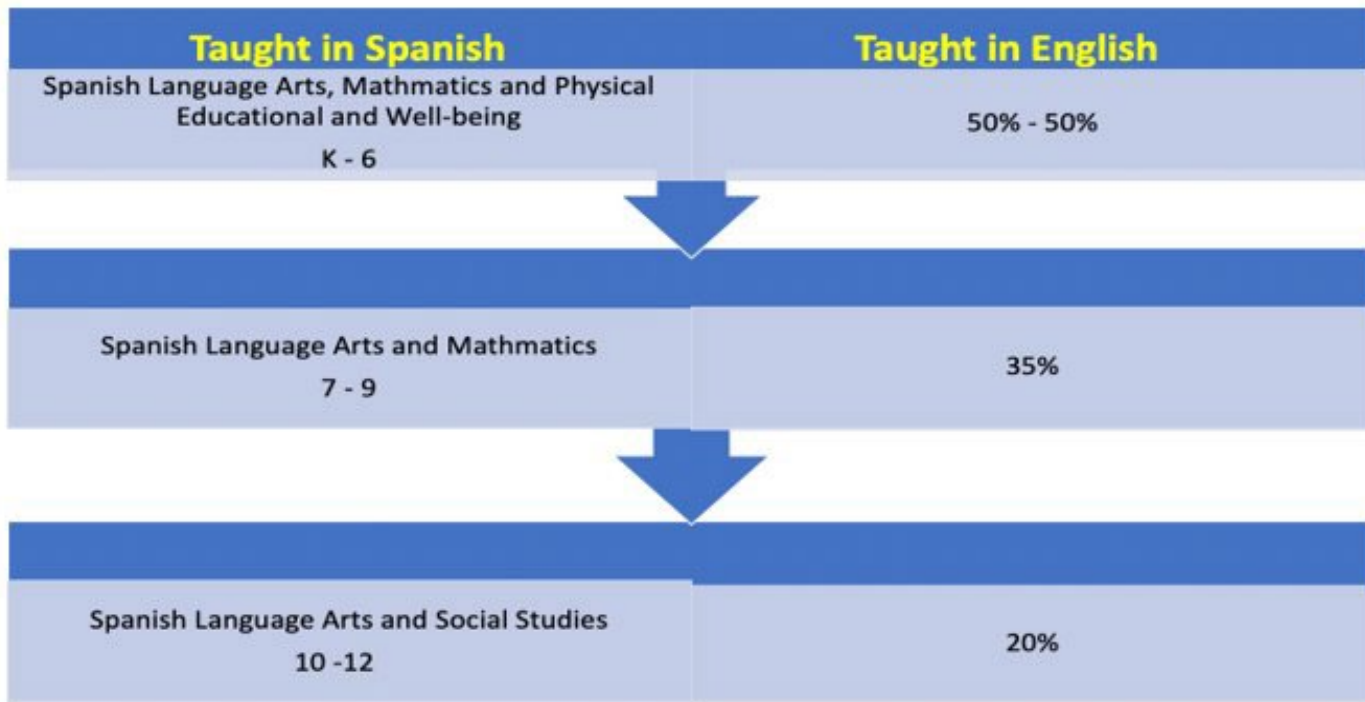
Empowered. Globally competent. Equipped to actively participate in the world.

Who Can Register

- Children entering **kindergarten or Grade 1 can register.**
- Previous Spanish experience is not required, and parents do not need to know the language.
- Students with previous Spanish language experience may start the Spanish Bilingual program at other grade levels. In the case of an alternate entry point, parents will reach out to the school directly to arrange an appointment for language assessment for suitable placement.
- **Registration opens January 15, 2024**



Spanish Bilingual Program

**OPTIONAL:**

The DELE official qualifications awarded by the Ministry of Education of Spain to certify the competency of candidates from outside Spain in the Spanish language. These certificates are valid for life.

Hablamos en español en la Escuela Canyon Meadows



Learning Experiences at ECM

Residencies and Field Trips

- At ECM, students engage in various residencies and field trips throughout the school year such as:
 - Latin Dance residency
 - In-line skating residency
 - Indigenous Education residency
 - Visits to the Leighton Art Center, Telus Spark Science Center, Fish Creek Park, Heritage Park, Ann & Sandy Cross Conservation Area, 'Explorando el Español', "Qué Pasa"
- Students and teachers use the outdoor learning area – **Learning Meadows Garden**



Spanish Bilingual Program



2023-2024 School Hours

Kindergarten

Morning Class	7:55 - 10:45 a.m.
Afternoon Class	11:50 - 2:40 p.m.

Alternate Fridays	7:55 - 11:55 a.m.
-------------------	-------------------

Grade 1 to Grade 5

Monday to Thursday	8:00 a.m. - 2:45 p.m.
--------------------	-----------------------

Fridays	8:00 a.m. - 12:00 p.m.
---------	------------------------

Spanish Bilingual Program

Getting to Know Your Child

- Intake meeting in May/June with new students with Learning Leader and Assistant Principal
- Details will be shared closer to May via email to book a virtual intake meeting



Spanish Bilingual Program



Registration



All registrations will be completed through **SchoolEngage**.

- One **Kindergarten** registration form for **new to CBE students** that will include a question about alternative programs with branching questions if the answer is yes.
- One **Grade 1-9** registration form for **new to CBE students** that will include a question about alternative programs with branching questions if the answer is yes.
- One Grade 1-9 alternative program **expression of interest** form for **current CBE students**.
- The expression of interest form includes:
 - parent email and phone number as contact info
 - a drop down menu to indicate the school the student currently attends

Spanish Bilingual Program



Transportation Considerations

- K-5 yellow bus transportation provided following CBE congregated stop guidelines for alternative programs
- **No Mid-Day** Kindergarten Bus
- Parents pay an annual fee for CBE yellow bus service or purchase monthly Calgary Transit passes
- Congregated stops are reviewed annually and informed by pre-registration for transportation, online through [MyCBE/PowerSchool](#)
- Congregated stops may not be within walking distance and alternate arrangements may be required to access the congregated stop

Additional Considerations

- Additional costs may be incurred for school-related field trips, performances and other learning and enrichment opportunities



Spanish Bilingual Program



Timeline for Registration

- Opens [January 15, 2024](#)
- Placement offered as registration is completed successfully via email, parents need to accept
- Kindergarten- Express AM or PM preference
- AM or PM placement will be communicated in April
- Please, check your email frequently after submitting registration

Spanish Bilingual Program



Alternative Programs | Registration Process

Registration for the 2024-25 school year begins Jan. 15, 2024.

Complete the Registration Process Following These Steps

1

Create a SchoolEngage Account



1. Go to [SchoolEngage](#)
2. Click *Create Account* button
3. Complete the Account Form
4. Check your Email for Confirmation and Click on the Confirmation Link
5. Sign in to SchoolEngage
6. Add a student

Refer to [SchoolEngage Support](#) for detailed steps

Launch
SchoolEngage 

2

Complete Registration Form

In SchoolEngage complete the Registration Form

In this step you will select **both** your child's designated alternative program and regular designated program school.

TIP

Remember to hit the green **Submit** button at the end of the Registration Form to ensure it has been fully completed.

3

Completed Form Sent to School For Processing

Please be patient as the school works through all their completed registrations.

School staff will contact you if there are any questions or concerns.

Please do not call the school.

4

School Informs Parents

The school informs the parent they are accepted into the program.

School may require additional forms to be completed.

[CBE HomeRegistrationRegistration](#) Alternative Programs



SCAN ME

Spanish Bilingual Program



CBE Residential Districts Designated to Escuela Canyon Meadows

Belmont
Bonavista Downs
Bridlewood
Canyon Meadows
Chaparral
Deer Ridge
Deer Run
Diamond Cove
Evergreen
Lake Bonavista
Legacy
Midnapore
Millrise
Parkland
Pine Creek

Parkland
Pine Creek
Queensland
Shawnee Slopes
Shawnessy
Silverado
Somerset
*Southwood
Sundance
Walden
Wolf Willow
Woodbine
Woodlands
Yorkville

*Southwood - Walk zone area only



School Tour

Preguntas y Respuestas

Q & A





*“Gracias”
for expressing interest in our
Spanish Bilingual Program!*

*We are excited to welcome you to our
Escuela Canyon Meadows family!*